

Operator / Parts Manual



Professional Edger Crack Cleaner

Covers Models:

LSE-BS5.5

LSE-GX120

LS-CCBS5.5

LS-CCGX120



LSE-BS5.5



LS-CCBS5.5

555 Goodrich Rd
Bellevue, OH 44811

419-483-9918

419-483-8128 fax

www.selbro.com

Salesinfo@selbro.com

SELBRO
INCORPORATED *A PoweQuip Company*

⚠ WARNING:

The engine exhaust from this product contains chemicals known to the State of California to cause cancer, birth defects or other reproductive harm.

⚠ CALIFORNIA

Proposition 65

Warning

This product can expose you to chemicals including soot, tars, and mineral oils, which are known to the State of California to cause cancer, and carbon monoxide, which is known to the State of California to cause birth defects or other reproductive harm. For more information go to www.P65Warnings.ca.gov

CALIFORNIA

Proposition 65

Warning

Battery posts, terminals, wiring, insulation and related accessories contain lead and lead compounds, chemicals known to the State of California to cause cancer, birth defects and other reproductive harm.

WASH HANDS AFTER HANDLING



Table of Contents

1. Instruction Labels	2
2. Assembly	3
3. Operation	5
4. Brush Safety	6
5. Specifications	7
6. Illustrated parts	8
7. Parts List	9

Safety





Assembly

NOTE: Before assembling the Edger/Crack Cleaner be sure all necessary parts are identified and located in the box. The following components have been shipped with the unit and are necessary to complete the assembly.

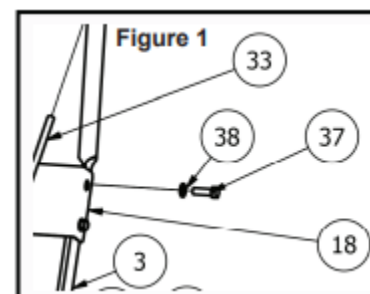
Qty	Part Number	Description	Illustrated Part Breakdown #
1	11584	Upper Engagement Rod	32
1	11862	Lower Wheel Height Adjustment Rod (3/8)	23



1	11863	Upper Wheel Height Adjustment Rod (3/8)	24
1	11866	Handle Assembly	7
1	12236	Handle Crossover Plate	18
Hardware Bag			
4	11815	Bolt, 5/16-18x1.0 HHCS	
8	11845	Washer, Flat 1/4 USS	
4	11905	Nut, Nylon Lock, 5/16-18	
3	11838	Cotter Pin	
1	11366	Washer, Flat, 5/16 USS	
2	11155	Washer, Flat, 3/8	
2	12298	Screw, Cap, #10-24x0.6	
2	11409	Washer, Flat, #8	
2	12299	Nut, Nylon Lock, #10-24	
1		Zip Tie (used to secure the throttle cable to handle)	
1		Engine Manual	
1		Operator Manual	

1. Install the upper handle assembly per figure 1 using the following hardware.

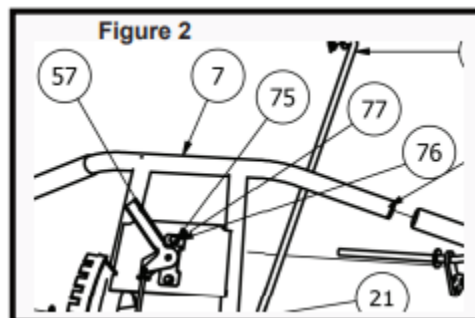
- a. 4-Bolt, 5/16-18x1.0
- b. 8-Washer, 1/4 USS
- c. 4-Nut, 5/16-18



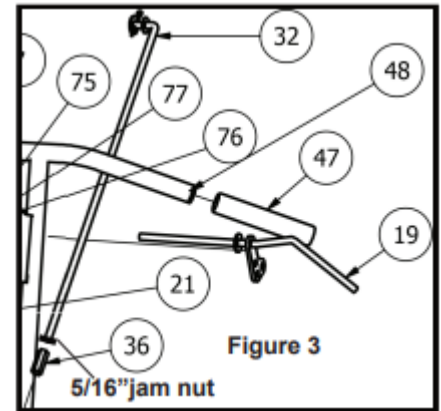
2. Place the upper handle inside the lower handle supports and place the crossover plate on the outside. Bolts are inserted through the crossover plate, lower handle and upper handle.

3. Install throttle head assembly to the upper handle assembly (figure 2) using:

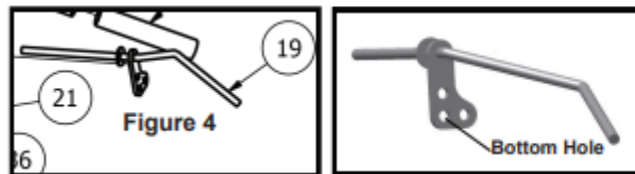
- a. 2-Screw, Cap, #10-24 (item 75)
- b. 2- Washer, #8 (item 76)
- c. 2-Nut, Nylon Loc, #10-24 (item 77)



4. Connect upper engagement rod #32 to lower engagement rod already attached to the unit using the attached coupling nut. Screw the two rods together until completely inserted into the coupling nut. See figure 3.

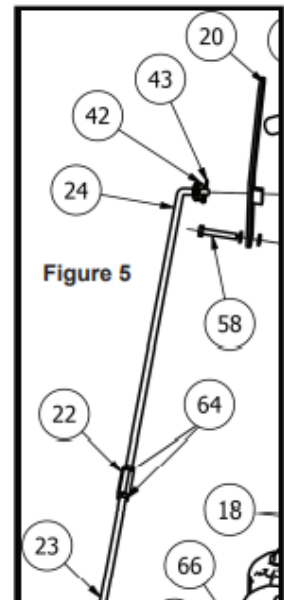


5. Tighten jam nut to prevent the rods from turning. Note: Orient the bent end of the upper rod so it will be easily inserted into the engagement handle # 19. See figure 4.



6. Insert rod # 32 into the bottom most hole on the engagement handle #19 and secure using a 5/16 washer and cotter pin.

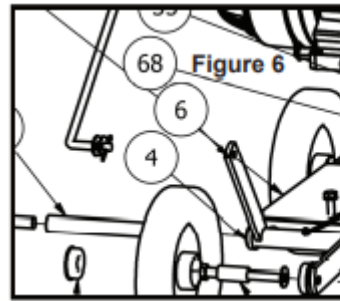
7. Assemble and connect height adjusting rods. Attach Rod # 24 to Rod # 23 using coupling nut # 22 and two jam nuts # 64. See figure 5.



8. Assemble having equal amounts of each rod inserted into the coupling nut, orient the bent rod ends so they are facing the same direction and secure tightly with jam nuts.

9. Insert the lower rod into the wheel bracket arm # 6 and secure with a 3/8 washer and cotter pin. See figure 6.

10. Now secure the upper rod # 24 into the Adjuster arm # 20 again using a 3/8 washer and cotter pin. See figure 5.



ATTENTION: The front wheel bracket pivot is NOT greased from the factory.

Be sure to grease the bracket before initial use and weekly thereafter.

Operation

- 1. DO NOT operate product when barefoot or wearing open sandals. Always wear safety glasses, Protective footwear and pants that cover your legs.**
- 2. DO NOT use product on gravel surfaces.**
- 3. Never operate this product without good visibility.**
- 4. Start the engine carefully. Make certain the brush is raised, in the store position, and that the engine stop switch is set to “on” before attempting to start. Keep hands, feet and clothing well away from moving parts.**
- 5. Never attempt to make any adjustments while engine is running.**
- 6. Never direct discharge of material toward bystanders. Keep area clear of people and pets. Be aware of your surroundings at all times.**
- 7. Stay alert for uneven pavement, holes in terrain or other unstable conditions when using this product. Always push the machine slowly over rough surfaces.**
- 8. Objects struck by the brush can cause injuries. The surface should always be carefully examined and cleared of all foreign objects prior to operation.**
- 9. Elevate the brush when the product is not in use. Take all possible precautions when leaving the machine unattended. Disengage attachments and stop the engine.**
- 10. When cleaning, repairing, or inspecting, make certain the brush and all moving parts have stopped, and the engine is not running. Disconnect the spark plug wire and keep the wire away from the plug so that unintentional starting does not occur. Keep all guards free from debris build-up.**
- 11. Never operate this product without guards, plates or other protective devices in place.**



12. Use only accessories and attachments supplied, or specifically recommended by the manufacturer.
13. Do not operate this product with a damaged or excessively worn brush.
14. **CAUTION:** Operate this product from a position where guards block the line of sight to the brush.

Power Brush Safety:

⚠ Warning - In normal power brushing operations, the material being removed such as dirt, debris, small stones and other residue will fly off the brush with considerable force along with brush filaments, which break off due to wear and fatigue.

The Potential of Serious Injury Exists for both the brush operator and others in the work area (possible 50 or more feet from the brush.) To protect against this hazard, wear Safety Goggles or Full Face Shields Worn over Safety Glasses with Sides Shields, along with Protective Clothing. You must follow all operator and safety instructions, as well as all common safety practices, which reduce the likelihood of physical injury, or reduce its severity.

Summary - Power Brush Safety:

Safety Goggles - Safety goggles or full-face shields worn over safety glasses with side shields **Must Be Worn** by all Operators and Others in the Area of Power Brush Operations.

Guards - Keep all machine guards in place.

Speeds - Observe all speed restrictions indicated on brushes, containers, and labels or printed in pertinent literature. "MSFS" means Maximum Safe Free Speed (R.P.M.) spinning free with no work applied. For reasons of safety, "MSFS" should not be exceeded under any circumstances.

Protective Equipment - Appropriate protective clothing and equipment must be used where there is a possibility of injury that can be prevented by such clothing or equipment.

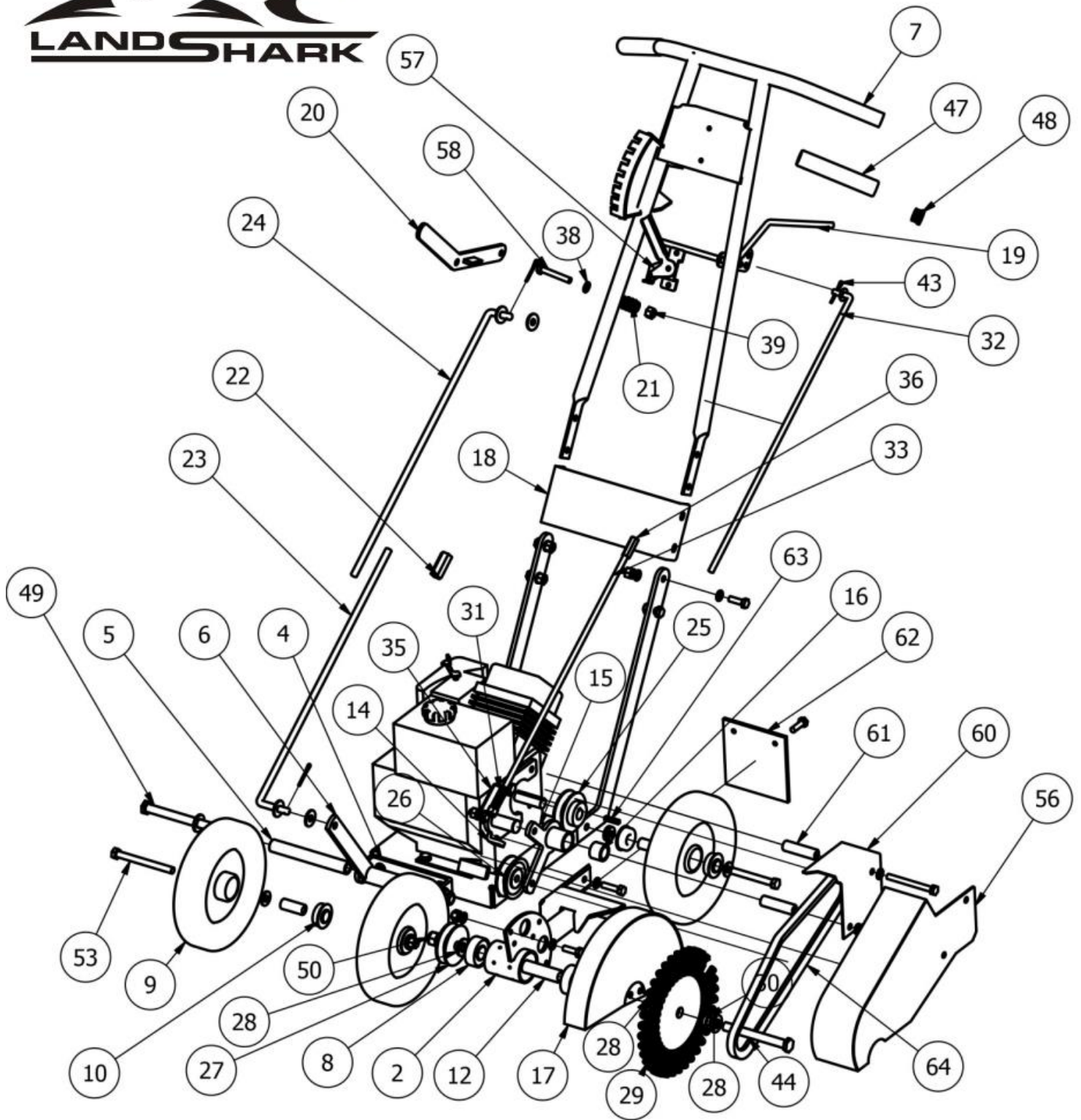


⚠ Warning! Failure to Observe Safety Precautions May Result in Injury.

Specifications

	LSE-GX120	LSE-BS5.5
Engine: HP	4.0 (2.98 kW)	3.5 (5.5 Ft/Lbs)
Model	GX120T1QA2	83100
Engine: Type	HONDA OHV	Briggs & Stratton
Fuel Capacity	2.1 qt. (2.0L)	.5 gal. (1.89 L)
Engine: Oil Capacity	0.63 qt. (0.6 L)	20 oz (.59 L)
Total Unit Weight:	87 lbs (39.46 kg)	88 lbs (39.92 kg)
Max. Operating Slope	20°	20°





Parts List

Item	Qty	Part Number	Description
1	1	11803	Engine Base
2	1	11848	Arbor Drive Assembly
3	2	11787	Handle Arm
4	1	11791	Wheel Bracket Clevis
5	1	12228	Sleeve, Wheel Bracket
6	1	11859	Wheel Bracket
7	1	11866	Handle Assembly
8	2	12231	Bearing, Drive
9	4	11829	Wheel Assembly
10	8	11493-.625	Bearing, Flanged Ball
11	4	12230	Sleeve, Wheel Spanner
12	1	12226	Sleeve
13	1	11828	Engine – See Model
14	1	11860	Idler Arm Base
15	1	11789-2	Idler Arm
16	2	07024	Bronze Bushing
17	1	12235 * 11802 *	Shroud, Brush * Shroud, Blade *
18	1	12236	Handle Crossover Plate
19	1	11851	Engagement Handle
20	1	11814	Adjuster Arm
21	1	11816	Adjuster Arm Spring
22	1	11790	Nut, 3/8-16, Coupling
23	1	11862	Lower Adjusting Rod
24	1	11863	Upper Adjusting Rod
25	1	11827	Motor Pulley
26	1	11818	Idler Pulley
27	1	11822	Arbor Drive Pulley
28	5	11127	Washer, Flat, 0.500" SAE
29	1	12237 * 12287 *	Wire Brush * Blade, 10 x 2" *
30	1	12237-1	Reducer Bushing
31	1	11813	Engagement Spring
32	1	11854	Upper Engagement Rod
33	1	11855	Lower Engagement Rod
34	1	11846	Belt Retainer



Item	Qty	Part Number	Description
35	1	11808	Engagement Spring Tab
36	1	11842	Nut, 5/15-18, Coupling
37	13	11815	Bolt, 5/16-18 x 0.975", HHCS
38	44	11845	Washer, Flat, 0.250", SAE
39	21	11905	Nut, 5/16-18, Nylon Lock
40	4	11914	Bolt, 5/16-18 x 1.750", HHCS
41	2	11147	Bolt, 5/16-18 x 1.250", HHCS, GR 8, YZ
42	2	11155	Washer, Flat, 0.375", USS
43	3	11838	Cotter Pin
44	1	12238	Bolt, 1/2-13 x 4.0", HHCS
45	1	11916	Bolt, 5/16-24 x 1.0", HHCS
46	1	11904	Washer, 5/16, Split Lock
47	2	11865	Handle Grip
48	2	11861	Handle End Cap
49	1	12239	Bolt, 1/2-13 x 7.0", HHCS
50	2	11145	Nut, 1/2-13, Nylon Lock
51	1	02258	Grease Zerk
52	2	12240	Bolt, 3/8-16 x 3.250", HHCS
53	1	12241	Bolt, 3/8-16 x 4.0", HHCS
54	3	11150	Nut, 3/8-16, Nylon Lock
55	12	11903	Washer, 5/16, USS
56	1	11801	Belt Guard
57	1	11826	Throttle Control Assembly
58	1	12242	Bolt, 5/16-18 x 2.0", HHCS
59	2	11243	Bolt, 5/16-24 x 1.0", HHCS
60	1	12244	Pulley Guard
61	2	11797	Guard Spacer
62	1	11821	Rubber Sweep
63	1	11844	Key Stock, 3/16"
64	1	11856	Drive Belt

*- Denotes parts for Edger Not shown in Illustration.

